



Site Preparation Guidelines

System Requirement Check list:

1 - Floor Space

2 - Computer

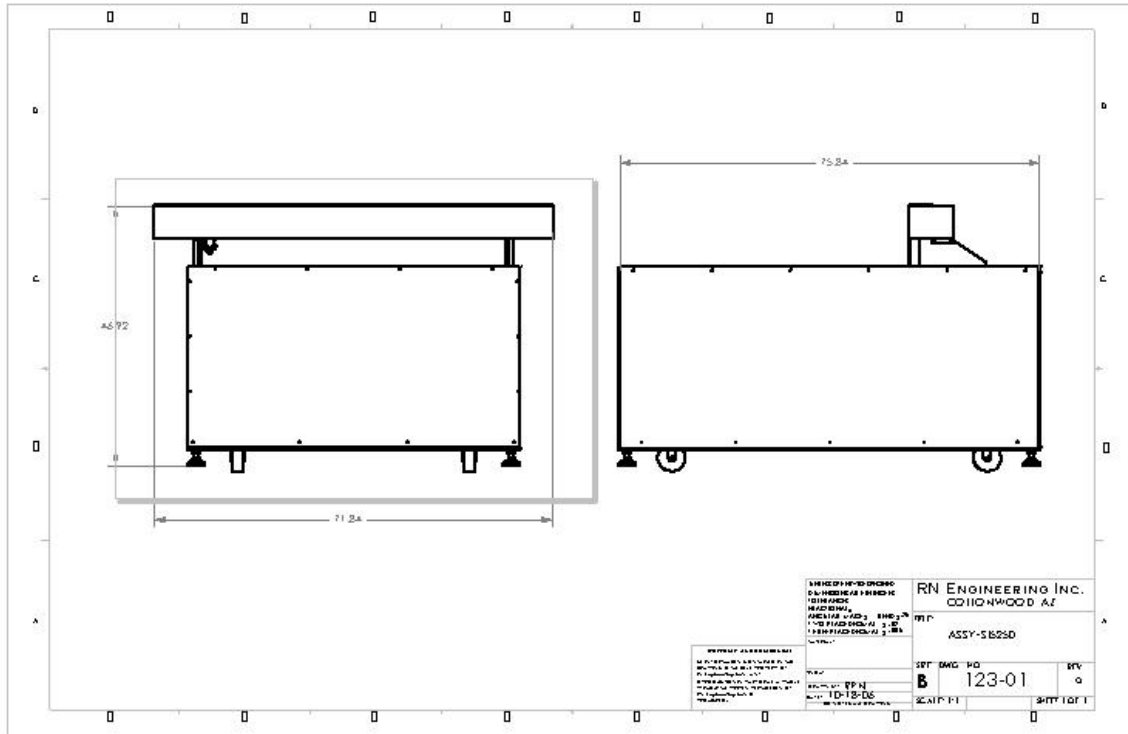
3 - Electrical

4 - Cooling

5 - Exhaust

6 -Air assist

1 - Floor Space



A clean, dry and level space is preferred.
 The machine includes leveling feet to achieve perfect positioning.
 A 24" clearance on all 4 side of the machine is recommended.

MODEL	WIDTH	DEPTH
SI 5225	74"	53"
SI 5250	74"	76"
SI 52100	74"	126"
SI 60100	82"	126"

2 – Computer (provided)

All Impact systems include the RD 100 software and driver. Impact software driver works with many windows programs like Coral Draw, Auto Cad and Adobe.

The driver requires a windows based (98, NT, 2000, XP) computer.

The driver and it's components require disk space of 5MB.

A serial cable port (RS232) or a USB cable is used to connect the system to the computer (provided).

3 - Electrical

LASER - Electrical requirements:

LASER (Watts)	10 to 60	100	200	400
AC input Voltage	120	180-264	180-264	180-264
Phase	1	3	3	3
Amps	20	20	30	30

MACHINE – Electrical requirements:

SYSTEM	
AC input Voltage	120
Phase	1
Amps	20

BLOWER	
AC input Voltage	120
Phase	1
Amps	20



4 - Cooling

External closed loop cooling system is required for systems with laser power of 200 and 400 watts. 100 watts lasers could be either air cooled or would require an external cooling system as well.

LASER (Watts)	100	200	400
Chiller cooling capacity	2.0 KW	4.0 KW	8.0 KW
Water flow	2 Gal/Min	2 Gal/Min	4 Gal/Min

Water temperature: 18-22 Degrees C

5 - Exhaust

Ventilation is required to remove fumes from the cutting area. A fan or an air cleaning system should be connected to the system using ducting.

There are multiple 4" diameter holes for fume extraction in the bed construction. They all converge onto one manifold with one exit at the back of the machine. Overhead duct is also used with the SI series machines.

Exhaust requirements:

SI 5225	SI 5250	SI 52100	SI 60100
500 CFM	800 CFM	1300 CFM	1300 CFM
@ 5" SP	@ 5" SP	@ 5" SP	@ 5" SP



6 -Air assist

The system requires an external source of clean, dry and oil free air.

Inert gasses could also be used with the system. Please consult one of our technicians.

A sub-micronic air filter and regulator are provided with the system. A standard ¼” quick disconnect is required to connect to the air input on the bottom of the air filter.

PSI required: 10-70 psi

Sales: sales@impactls.com
Technical support: tech@impactls.com
Application Support: apply@impactls.com
General: info@impactls.com

USA: 475 Airpark Rd. #4
Cottonwood, Arizona, 86326
Tel: 928-649-9760
Fax: 928-649-1034

CANADA: 14 Connie Cres. #5
Concord, Ontario, L4K 2W8
Tel: 416-567-5879
Fax: 905-669-0043